

# EOSC Projects: INFRAEOSC-07 projects & EGI Advanced Computing for EOSC (EGI-ACE)

**Gergely Sipos**

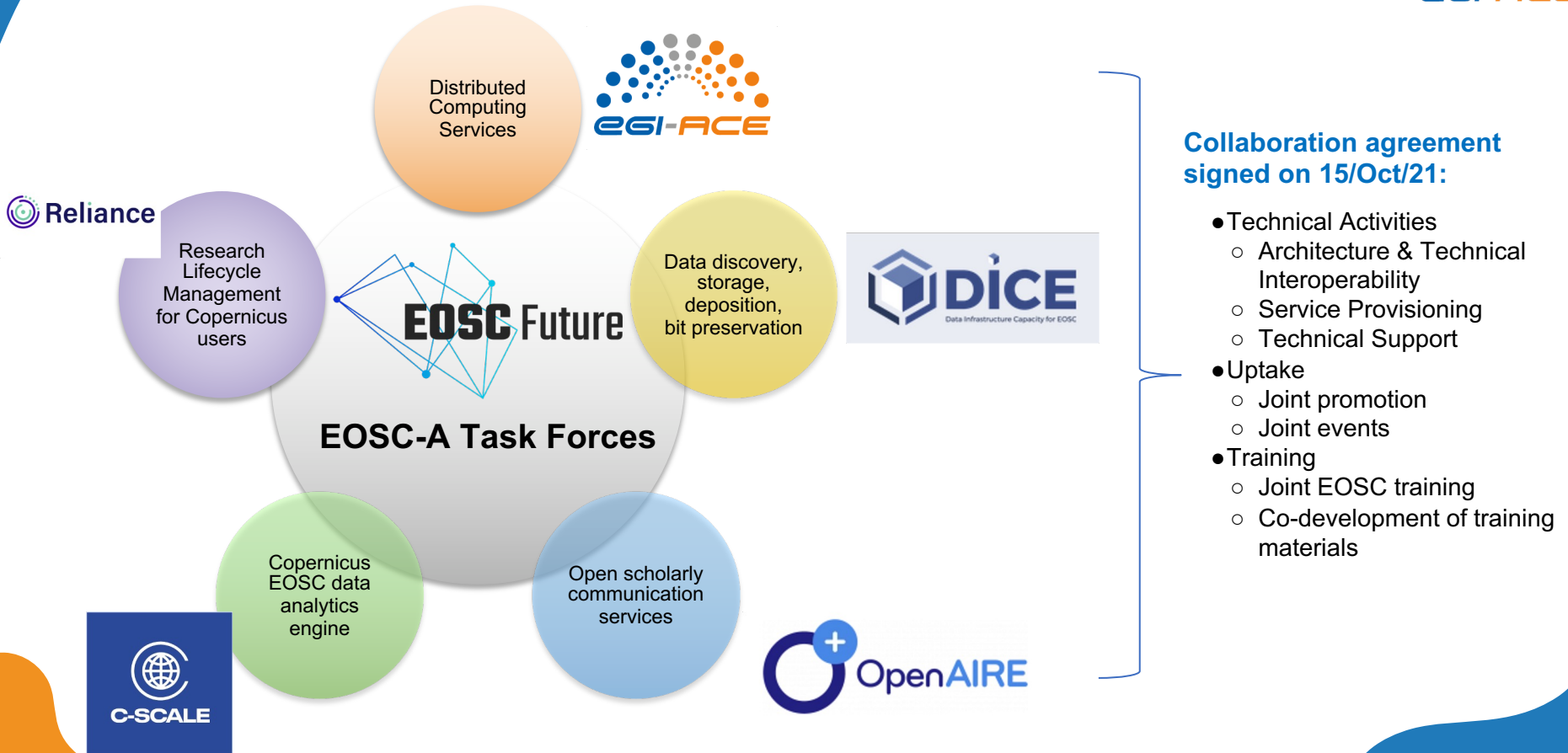
*Head of Services, Solutions, Support @ EGI Foundation  
EGI-ACE Project Technical Coordinator*

IBERGRID 2022, Faro, 10-10-2022

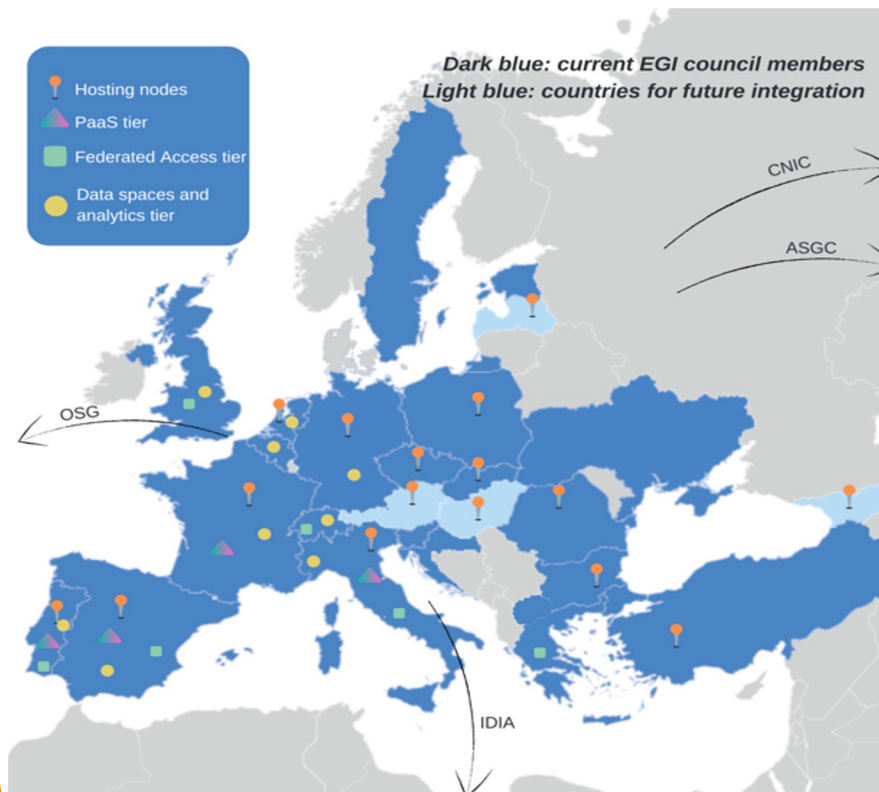


EGI-ACE receives funding from the European Union's Horizon 2020 research and innovation programme under grant agreement no. 101017567.

# EOSC Capacity Building projects (INFRAEOSC-07)



# EGI-ACE facts



## Consortium:

- 33 Partners, 23 third parties
- EGI council members + RIs (~ERICs)

## Scope:

- **49% service delivery (Virtual Access)**
- Co-development of 'thematic services'

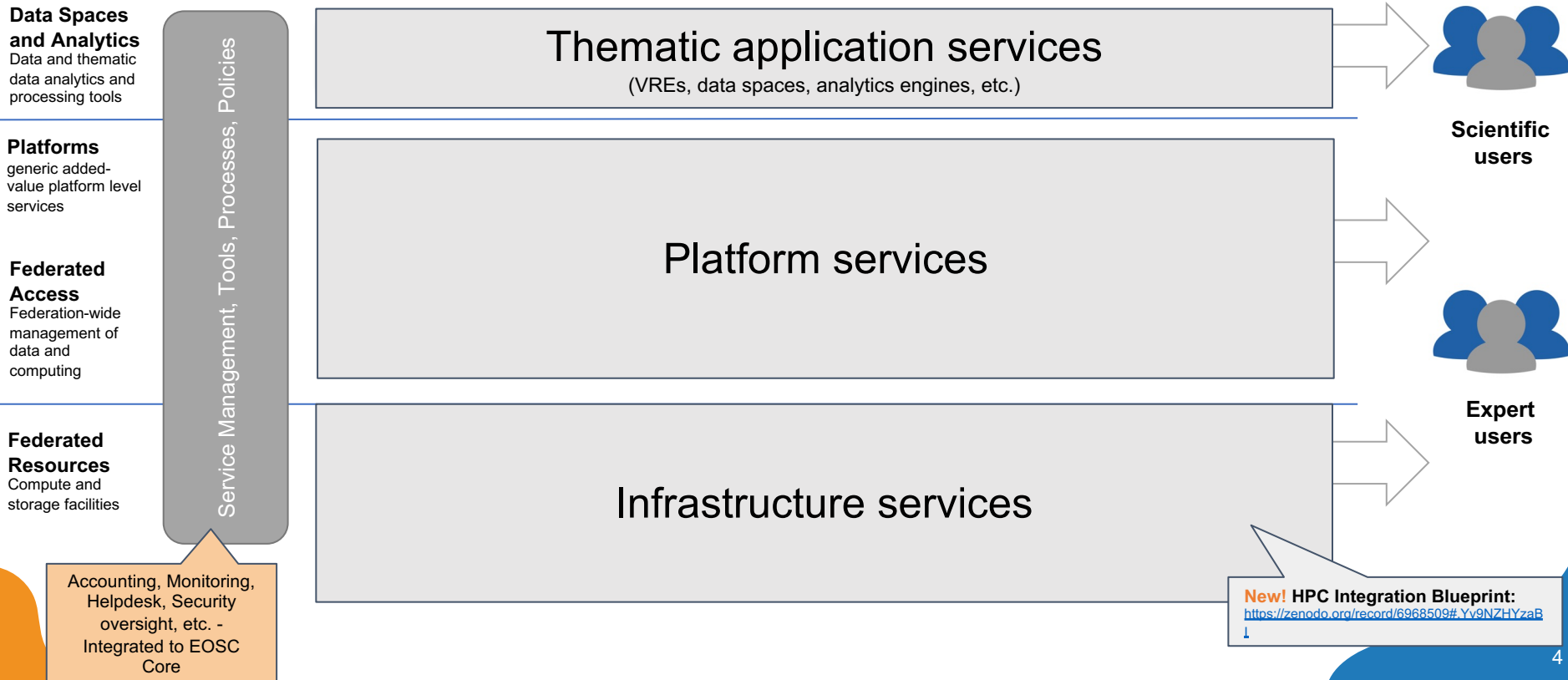
## Duration:

- Jan 2021 - June 2023 (30 months)

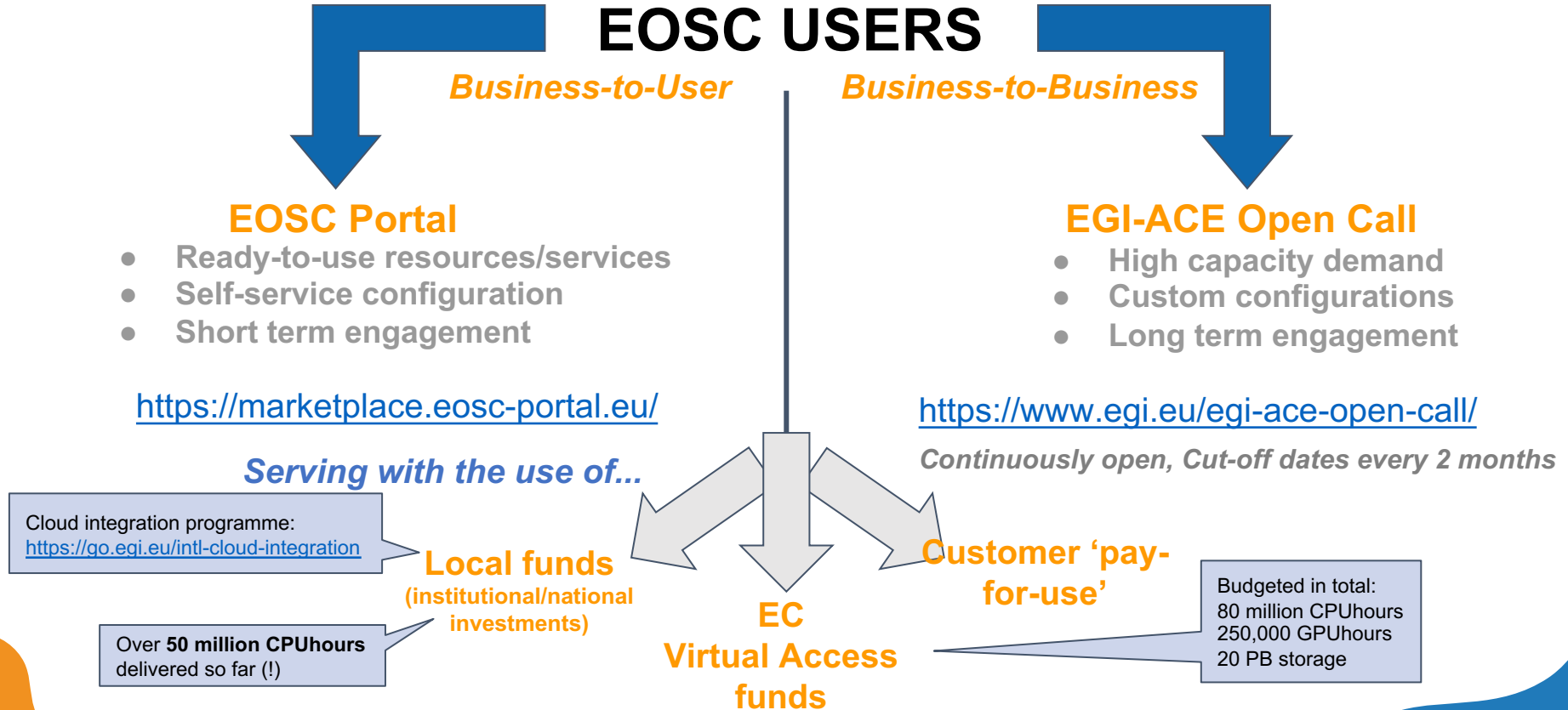
## Partners from IBERGRID:

- CSIC: Cloud Compute, DEEP ML/AI services
- INCD & LIP: Cloud compute service
- LNEC: OPENCoastS\_PLUS service

# Services for compute-intensive open science



# Sustainable Open Science environments



# Our vision for computing in EOSC

PORTUGUESE  
ROADMAP  
OF RESEARCH  
INFRASTRUCTURES  
– 2020 Update

FCT – Fundação para a Ciência e a Tecnologia

National research infrastructures and projects



...



Resource brokering  
and access support

Service  
Level  
Agreement



Technical federation

Identity portability + Data portability + Application portability

Operation  
Level  
Agreement



EuroHPC  
Joint Undertaking



National and international  
compute infrastructures

Aligned  
science  
and  
compute  
priorities

# Thank you!

Contact: [egi-ace-po@mailman.egi.eu](mailto:egi-ace-po@mailman.egi.eu)

Website: [www.egi.eu/projects/egi-ace](http://www.egi.eu/projects/egi-ace)



[EGI Foundation](#)

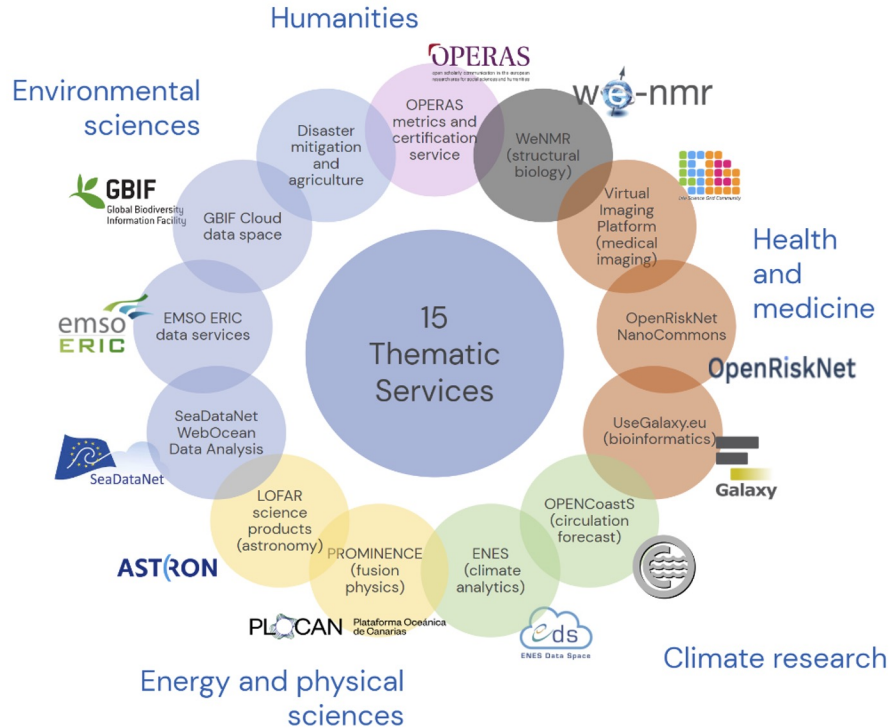


[@EGI\\_eInfra](#)

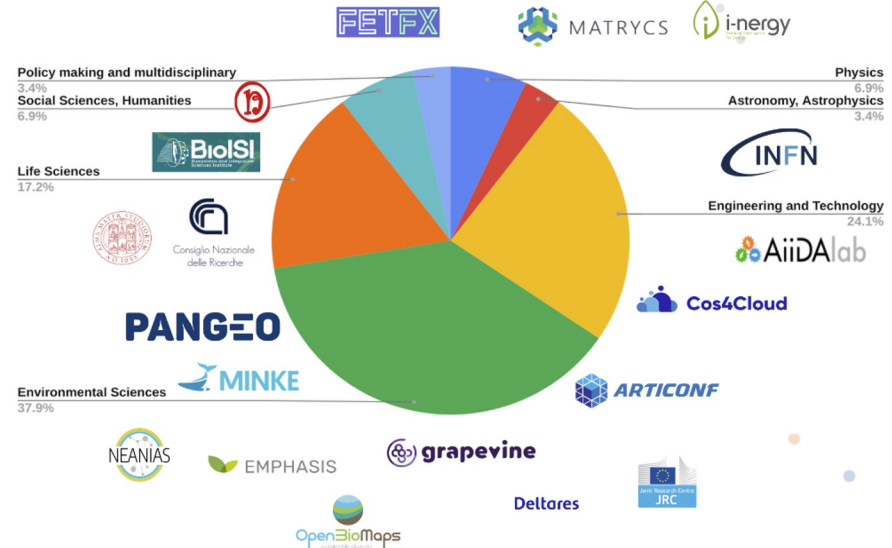


EGI-ACE receives funding from the European Union's Horizon 2020 research and innovation programme under grant agreement no. 101017567.

# Thematic applications and application services

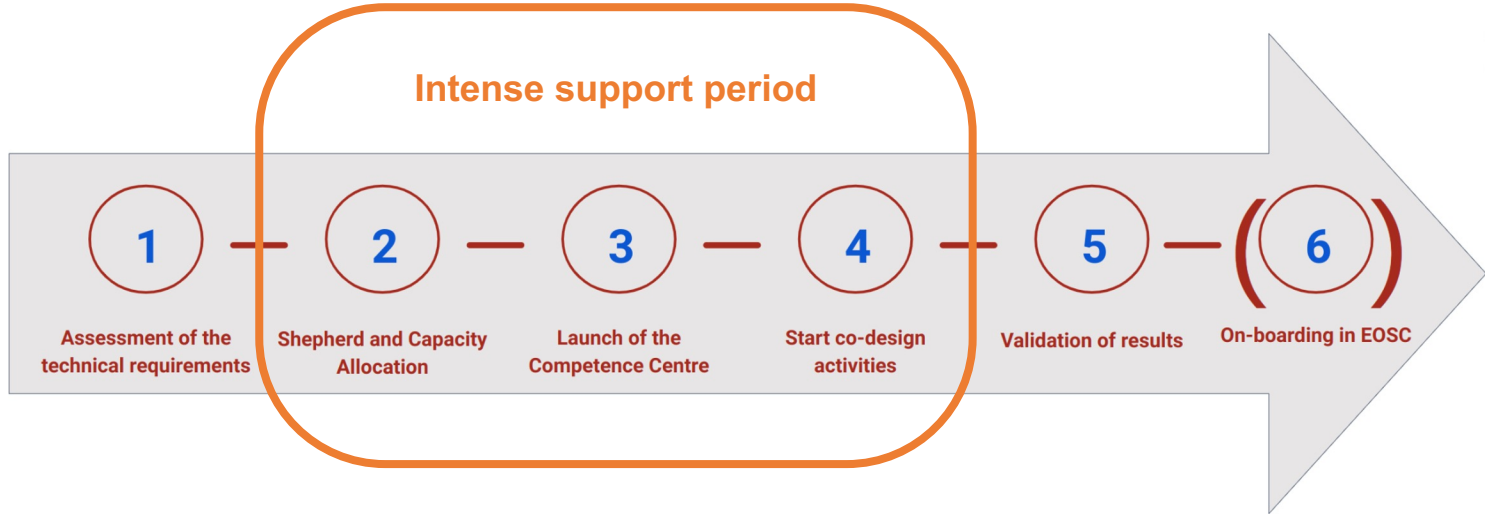
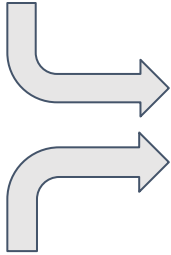


In the consortium



External users

# Scalable, distributed user support



*Open Call*

## Shepherds and Competence Centres

- Scalable and distributed structure
- Brings the right expertise for each use case
  - Service and resource providers
  - Technical experts, and
  - Observer parties